



QMSOFT® Advices - Maintenance update V8.00 - Release 11.2024

Release 8.1

**L&W Gesellschaft für Fertigungsmesstechnik
und Qualitätssicherung mbH**

Jun 12, 2025

Contents

1	Advices - Maintenance update V8.00 - Release 11.2024 (or newer)	1
1.1	Updating the names of standards and test regulations or adding to them	1
1.2	Updating / adding type information	2

Advices - Maintenance update V8.00 - Release 11.2024 (or newer)

The current release is a so-called “minor update” which does not require a new QMSOFT® license. No change to the database structure is required either.

To use some of the new functions (including updating standards and test specifications), we recommend carrying out the following steps after installing the program:

1.1 Updating the names of standards and test regulations or adding to them

Since the names of (most) standards and regulations are stored directly in the database, changes to the names (e.g. new issue date) are not automatically updated. It may also happen that newly implemented standards are not in your database.

To compare with the current delivery status, please start the functions as shown in the figures [Fig. 1.1.1] [Fig. 1.1.2].

- a) Updating and supplementing standards
 - Carry out the marked functions in the laboratory management (“house” symbol)

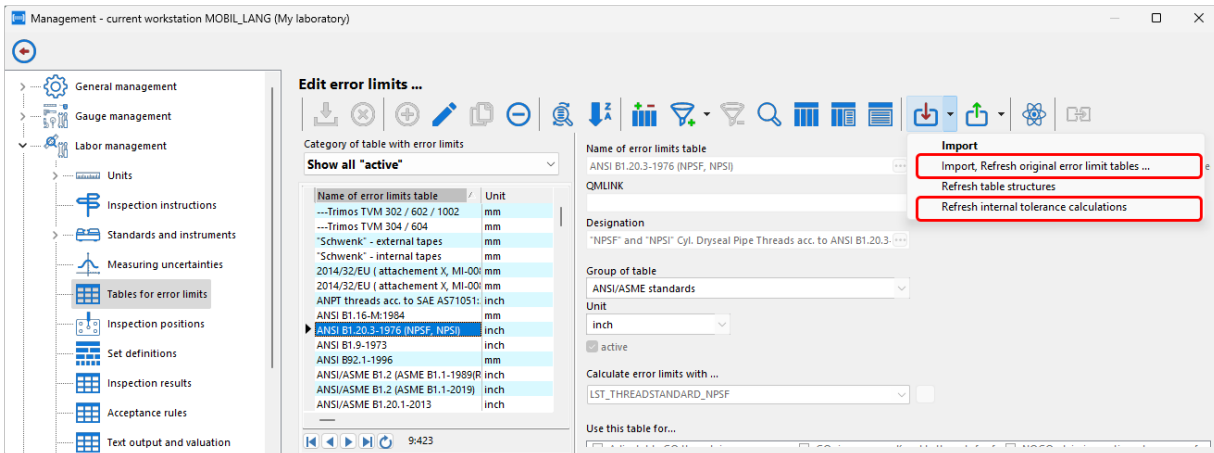


Fig. 1.1.1: Updating tables for error limits.

- b) Updating and supplementing inspection instructions.
Execute the highlighted function in the laboratory management.

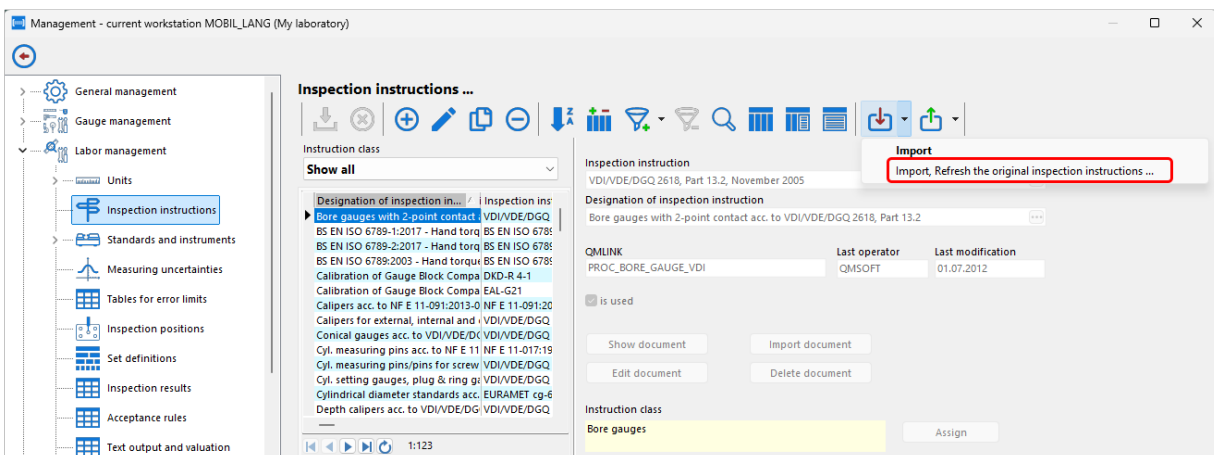


Fig. 1.1.2: Updating inspection instructions.

1.2 Updating / adding type information

To import new types that you do not yet have (of course only if required) or to update existing type definitions, call up the function *Settings* → *Types* in the gauge management. In the following input window you will find the function *Specials* → *Import original type deefinition(s)* After calling up the function you will receive a window [Fig. 1.2.1] for selecting the desired types.

Note

If you are sure that you have not made any individual changes to the types supplied with QMSOFT®, you can import all types. Otherwise, select only the types that you want to update or add to.

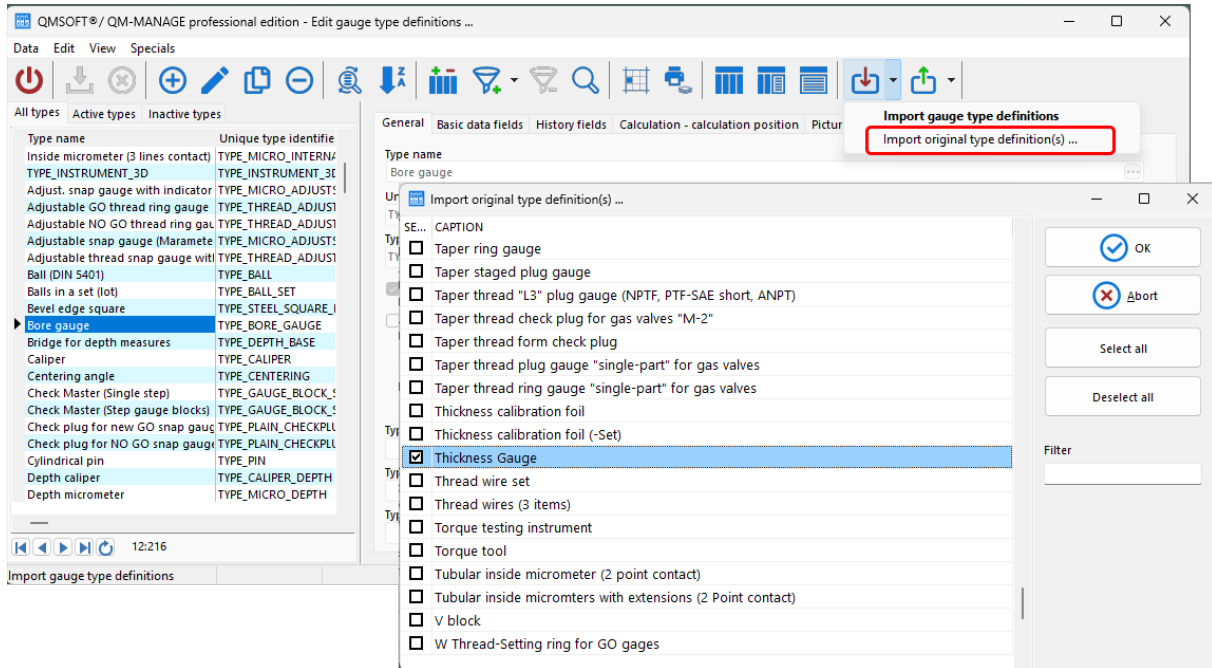


Fig. 1.2.1: Updating gauge types.

L&W GmbH, 14.11.2024