



your partner for integrated innovative RF-IDENTIFICATION system solutions

microSensys

***iID*[®] 2000 (mobile) driver engine**
supporting RS232, USB, Compactflash and Bluetooth[™] devices
on several Microsoft Windows[®] platforms

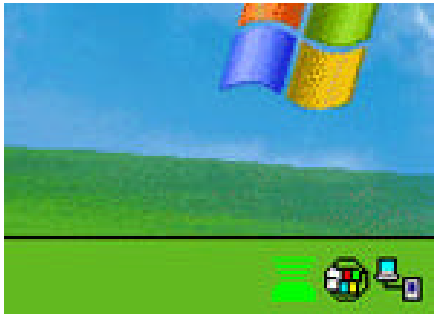
Short installation manual

Content

| | | |
|--|-------------------------------|---|
| | Introduction | |
| Device drivers | | 3 |
| | Installation | |
| Driver installation for PC | | 4 |
| Driver installation for PDA/Terminal | | 5 |
| Handling the Demo-Software | | 7 |
| | Additional information | |
| Commandset / memory maps of supported transponders | | 9 |

Introduction

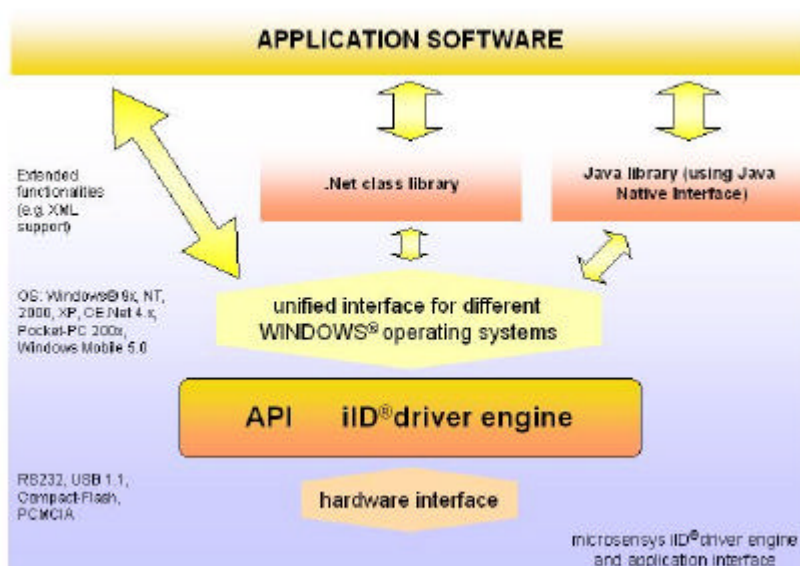
Device driver



MICROSENSYS RFID interfaces for RS232, USB, CompactFlash and Bluetooth SPP port are delivered together with the actual version of iID® (mobile) driver engine.

This device driver exports a commandset, which is abstracted from the different RFID systems supported by MICROSENSYS RFID interfaces.

So you can easily work with mixed RFID systems, without the need of knowing details about the different systems. Nonetheless, direct access to specific transponder functionality is also supported beneath these intelligent functions.



By delivering an identical API for different host interfaces and host platforms programming is more comfortable than before. Switching between different devices or host platforms is possible without or with a minimum of changes in your application software.

Device drivers are necessary for optimal parameter setting and communication with the according RFID Interfaces.

MICROSENSYS iID® driver engine delivers a unique programming interface for RFID interfaces, which can be connected to standard host interfaces like RS232, USB, CompactFlash or Bluetooth™.

Installation

Driver installation for PC

For communication with your MICROSENSYS RFID interface you should install the hardware driver. During installation of the demo software the driver will be copied into the Windows system directory.

iID® driver engine is tested for the operating systems Windows 98SE, Windows ME, Windows NT, Windows 2000 (min. SP4a) and Windows XP.

Installation of device driver together with demo software

- 1) For running the demo software you have to install the MICROSOFT® .Net Framework at first, because the application is based on this framework. You can find the redistributable in *,Install\DemoApplication\Net Framework redistrib'.*
- 2) Go to the folder *,Install\DemoApplication\PC'* on the CD-ROM
- 3) Run *,setup.exe'* in this folder
- 4) Follow the instructions of the setup program
- 5) After successful installation you can run the application from the start menu

Using the driver without demo software

- 1) Change to folder *,\Driver\PC_WIN32\Release'* on the CD-ROM
- 2) Copy the files from this folder to *,\windows\system'* or *,\windows\system32'* of the PC

MICROSENSYS USB interfaces require the separate installation of the USB device driver. For installing the device driver, see the manual of your RFID USB interface.

Driver installation for PDA/Terminal

For communication with your MICROSENSYS RFID interface you should install the hardware driver. For mobile devices the installation is splitted to driver installation and installation of the demo software.

iID® driver engine is tested for the operating systems Pocket-PC 2000, Pocket-PC 2002/2003, Windows® Mobile 2005 and Windows® CE.Net 4.1/4.2/5.0.

Installation of device driver (mandatory)

- 1) Depending on the OS type of your device go to the folder '*Install\Driver\Cab\CENet*' or '*Install\Driver\Cab\PPC*' on the CD-ROM
- 3) Run ,setup.exe' in this folder
- 4) Follow the instructions of the setup program
- 5) During the next Activesync connection with the device the software will be downloaded
- 6) Perform the steps on the mobile device, which are displayed
- 5) After successfull installation the driver is copied to your device's system directory

Installation of demo software (optional)

- 1) For running the demo software you have to install the MICROSOFT® .Net Compact Framework 1.0 SP2 at first, because the application is based on this framework. You can find the redistributable in , *Install\DemoApplication\Net Framework redistrib.*
- 2) Depending on the OS type of your device go to the folder ,*Install\DemoApplication\CENet*' or '*Install\DemoApplication\PPC*' on the CD-ROM
- 3) Run ,setup.exe' in this folder

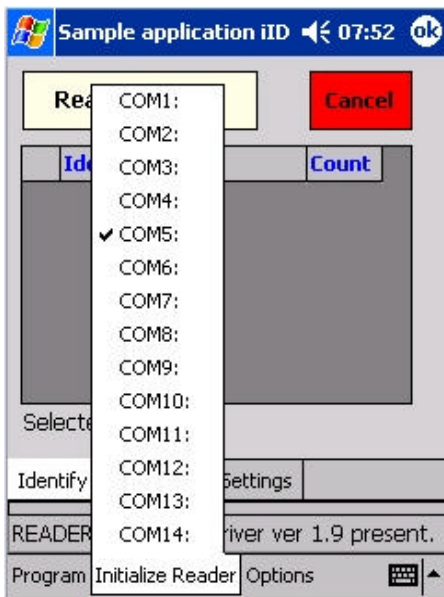
- 4) Follow the instructions of the setup program
- 5) During the next Activesync connection with the device the software will be downloaded
- 6) Perform the steps on the mobile device, which are displayed
- 5) After successful installation you can run the application from the start menu of the mobile device

Manual driver installation

- 1) Change to folder , Driver\Mobile\xxx\yyyy' of the CD-ROM
(where xxx is the OS type and yyyy is the CPU-type of the mobile device)
- 2) Copy the files located in this folder to ,\windows' on the mobile device

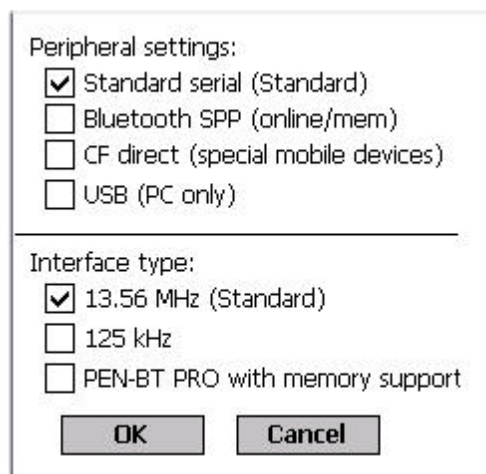
Handling the Demo software

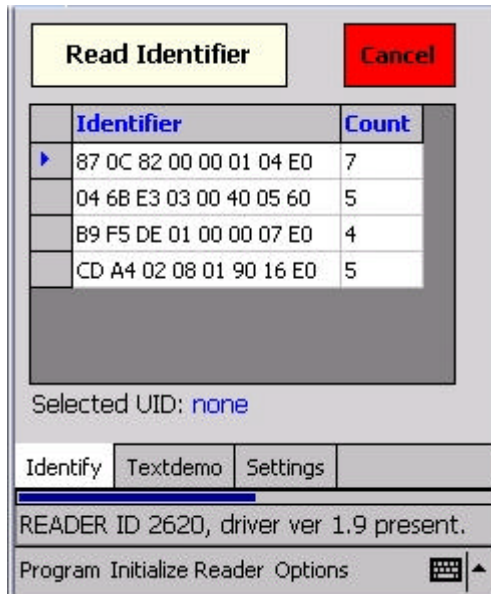
The demo software includes simple commands for representation of the interface and driver functionality to check the proper installation of your MICROSENSYS RFID hardware.



After running the software please select the according port, system (13.56 MHz / 125kHz / 125kHz,13.56 MHz mem) and the type of host interface (Serial, Bluetooth™ SPP, USB or CompactFlash **(for MICROSENSYS Compact Flash interfaces we also suggest using the serial emulation mode))** in the *,Initialize Reader'* menu and the following *'Settings'* menu.

When using a Bluetooth™ or CompactFlash interface, the host system allocates a serial port for the RFID device. In most cases the port number can be detected via the Bluetooth™ Stack or the device manager.





After initializing the reader, the ID-number should be displayed in the status bar. Using the different tab sheets you can now evaluate ReadOnly and Read/Write functionality of the RFID interface.

The options menu allows you to enable the anticollision mode (if supported by the RFID device) and to increase/decrease the priority of the different RFID threads.

Commandset / memory maps of supported transponders

The commandset of your MICROSENSYS RFID interface is shown in the appendix 'API Documentation' located on this CD-ROM.

There is also different sample code available, located in the folder 'Sample-Code' please ask MICROSENSYS at info@microsensys.de for further source code support.

MICROSENSYS RFID interfaces support a lot of available RFID systems of different suppliers, which are available on the market at this time.

For optimal usage of different transponders the knowledge of extended functionality delivered by these systems is very usefull.

MICROSENSYS supports system integrators and end customers by delivery of memory maps of different systems and consulting for permutation of different applications.

Please contact MICROSENSYS at info@microsensys.de or by phone at +49 361 59874-0.